

Top tips for laboratory success: the **TipOne**[®] pipette tip system.

A SUCCESS STORY SINCE 1998



Passionate for science.



- **Product overview.**

- Ordering information.

- TipOne® 'evolution movement'



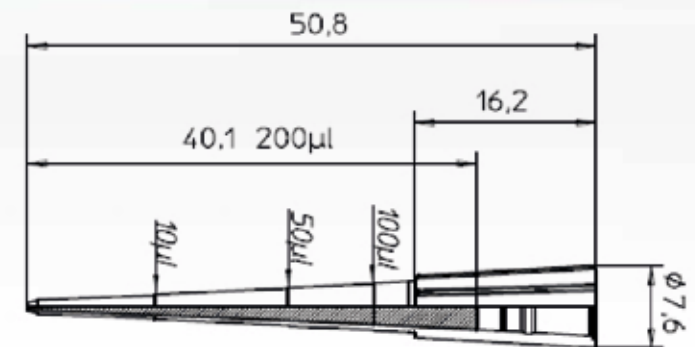
Product overview.

Why TipOne[®] pipette tips?



MORE COMPLICATED THAN YOU THINK

You might think of pipette tips as just small, inconspicuous items of plastic that are “all the same”. However, if you think producing a pipette tip is a simple matter, then you’re wrong! At Starlab, a lot of passion and expertise goes into our pipette tips. Why? Because the quality of the tip used is an essential factor in obtaining accurate results! Pipette tips are used for a variety of working steps, and inaccuracy at each step can accumulate to have a negative influence on your results. At Starlab, our aim is to minimize those inaccuracies through the design and expert manufacturing of TipOne[®], to give you more confidence in your results. That’s why the quality of a pipette tip is so important, and that’s why TipOne[®].



The final construction drawing documents the completed product design process. The slightest deviation from the normal value has a decisive influence on the tip fit. Starlab tips are produced with extreme precision and are tips that you can rely on.

TipOne® expertise and design.

LIQUID HANDLING EXPERTS

Starlab are liquid handling experts. We have many years experience in automated injection moulding processes for the manufacture of high quality laboratory consumables. With TipOne® we have developed one of the world's leading pipette tip systems.

PRODUCT DESIGN

What should the optimum tip look like? Its appearance is not about beauty, but rather the optimal shape, the length and color of the tip, the right material, and the correct wall thickness. The tip must fit perfectly with your pipette. Not only that, the tip must withstand very high mechanical stresses, and even autoclaving. All of this comes down to the design and the expertise of the manufacturer.

UNIVERSAL TIP FIT

One tip fits all! The tip collar of TipOne® tips is engineered to fit all popular pipettes without any loss of accuracy or precision.



THE LATEST TECHNOLOGY

The use of multiple cavity tools for the injection moulding process guarantees high conformity within one batch. The automated moulding and assembling procedures are carried out under clean-room conditions to eliminate contamination.

- Coaxial, very straight tips made from 100% pure polypropylene
- Extremely smooth and homogeneous surfaces
- Tip cone engineered to fit all popular pipettes
- Certified RNase, DNase, DNA and Pyrogen free
- Autoclavable*



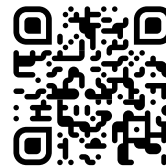
TipOne® production & quality.



WE WON'T TOLERATE INTOLERANCE

Conformity is especially crucial when performing serial examinations needing reproducible results. Pipette tips must meet two main criteria: an exact shape and absolute purity. Imagine, you are using a pipette series consisting of 96-tip racks, but the tip geometry and the fit is different from tip to tip. Starlab not only guarantees the lowest manufacturing tolerances between different batches, we can pledge this within the same batch too.

Sterile TipOne® tips are validated according to EN ISO 11137-2:2007. All TipOne® tips are certified RNase, DNase, DNA and pyrogen free. Each of these parameters is monitored at set intervals by an independent testing institute. In addition to this, internal quality control checks are carried out to check the tip geometry, and to ensure that the correct packaging is being carried out safely.



WATCH VIDEO

Certificate of Quality

Article Number	Lot Number
----------------	------------

Product Description	Date of Issue
---------------------	---------------

Starlab certifies that the following product is produced in a fully controlled environment that is designed to be free from detectable RNase, DNase, DNA and Endotoxins.
Selected samples of product from this production environment have been tested for the following parameters on a recurring basis.

TESTING RESULTS

RNase	testing method: RNA Digestion limits: < 1 x 10 ⁻⁶ Kunitz Units
DNase	testing method: DNA Digestion limits: < 1 x 10 ⁻⁶ Kunitz Units
Human DNA	testing method: Polymerase Chain Reaction limits: < 2 x 10 ⁻⁴ mg
Endotoxin	testing method: Kinetic-chromogenic LAL-Test (Ph. EUR. 2.6.14) limits: < 0.05 EU/ml

The concentration levels of the tested samples for RNase, DNase, DNA and Endotoxins are less than the above stated limits.

Sincerely


Klaus Ambos
CEO STARLAB International GmbH

Starlab International GmbH
Neuen Möllingbaum 38
22143 Hamburg, Germany
E-Mail: info@starlab.de
www.starlabgroup.com
Tel.: +49 (0)40 675 99 39 0
Fax: +49 (0)40 675 9939 20

Authorised Managing Director
Klaus Ambos

Registry Court
Amtsgericht (first instance court)
Hamburg
Register number: HRB 122020
VAT ID no. pursuant to
§ 27 a German
VAT Act DE 214 691 717

 starlab

Passionate for science.

TipOne® is a system with a system!

ONE SYSTEM, ONE PLASTIC-SAVING SOLUTION

TipOne® is designed to be a plastic-saving pipette tip system. It is reusable, refillable and recyclable. It is designed with the least component parts possible, with every part of the system interchangeable with the rest. The exceptional quality of our racks means they can be reused again and again with the refills, even if autoclaving, without loss of stability or shape.

TipOne® sterile and non-sterile refills require less raw materials to manufacture compared to racked tips, resulting in less consumption of resources, and lower CO₂ emissions during production and delivery. The compact designs also help save valuable storage space in your lab.

The plastic packaging components of the TipOne® system (excluding the bag for loose tips and the clear film wrap) are made from polypropylene (PP) for easy recycling, where no separation of materials is required.

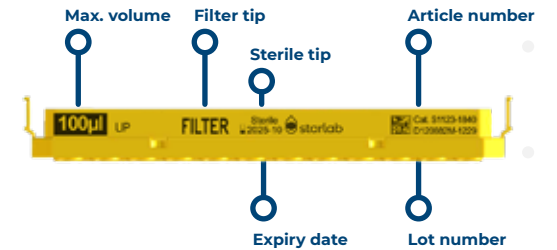
INTELLIGENT QUALITY

TipOne® tip wafers contain all the useful information you need to know on the tips that it holds.

A 2D matrix code on every wafer allows full traceability of item and lot number, which is ideal for labs using LIMS (Laboratory Information Management Systems). Our racks are designed to be refilled many times, so having this information on the wafer and not on a label on the rack avoids confusion or errors when racks are refilled.

Colour-coded wafers provide easy volume identification at a glance. The colour-coding mirrors the coding on our ErgoOne® pipettes.

Simplicity is key! The system comprises two racks only: a small rack for use with tip volumes 10 µl to 300 µl, and a large rack for use with tip volumes 1000 µl and 1250 µl.



SMALL RACK

- 10 µl. 10/20 µl.
- 20 µl. 50 µl. 100 µl. 200 µl.
- 300 µl.

LARGE RACK

- 1000 µl. 1250 µl

The TipOne® system overview.



The perfect rack.



KEY BENEFITS

- ✓ Excellent stability and durability
- ✓ Wafer locks securely into rack for trouble-free pipetting
- ✓ Rack (excluding lid) made with 25 % recycled plastic¹⁾
- ✓ Reusable, autoclavable and recyclable²⁾

Tip options:
Non-sterile tips.
Sterile tips.
Sterile filter tips.

THE PERFECT PIPETTE TIP SYSTEM STARTS WITH THE PERFECT RACK

- Lid opens at an optimised angle for unrestricted access
- Optimised base geometry provides secure and precise handling
- Only two sizes in the system: small rack for tip volumes 10 µl to 300 µl and large rack for 1000 µl and 1250 µl tips
- Tip information is printed on the wafer, so you always know the volume and type of tips you are using, whether the tips were originally racked or the rack is being reused with a refill
- All components made of fully recyclable polypropylene²⁾



Autoclavable

Designed to be reused again and again, TipOne® racks can withstand at least 100 autoclave cycles while retaining stability, strength and shape. Autoclave with the lid closed to save space and reduce both the number of autoclave cycles and energy costs.



Ideal for multi-channels

Unrestricted multi-channel access is provided by the optimised opening angle of the lid and the design of the wafer. The rack's base geometry and centre of gravity provides stability and the sturdy wafer ensures a secure tip fit across all channels.



Stackable

The racks are designed to stack safely on top of one another to help save valuable lab space.



Reusable

Reuse the racks over and over again with the easy to use refill systems. This will reduce the amount of new plastic coming into your laboratory as well as minimise the amount of plastic for recycling.

¹⁾Racks manufactured from July 2024.

²⁾All system components (excl. clear film wrap) made from recyclable polypropylene. Film wrap made from recyclable LDPE.

THE CLEVER REFILL



Tip options:
Non-sterile tips.



KEY BENEFITS

- ✓ Space saving
- ✓ Autoclavable, once racked
- ✓ Tip info printed on every wafer
- ✓ Recycled packaging¹⁾
- ✓ Recyclable²⁾



THE QUICK AND EASY WAY TO OBTAIN ECONOMICAL RACKED TIPS

- Supplied in two individually-wrapped stacks of five wafers
- Tip information printed on wafers can be seen easily without having to expose tips
- Spacers between the layers protect tips from contamination (10/20 µl, 300 µl & 1000 µl volumes only)
- Once racked, the refills can be autoclaved
- Clear, plastic system components made from 100 % recycled plastic¹⁾
- Fully recyclable²⁾

THE FULLY ENCLOSED STERILE REFILL



Tip options:
Sterile tips.
Sterile filter tips.



KEY BENEFITS

- ✓ Economical
- ✓ Quick and easy to load
- ✓ Tip sterility never compromised during racking
- ✓ Recycled packaging³⁾
- ✓ Recyclable²⁾



THE ECONOMICAL, PLASTIC-SAVING ALTERNATIVE TO STERILE RACKED TIPS

- Individually wrapped
- Tip information printed on wafers can be seen easily without having to expose tips
- Top and bottom shells protect integrity of sterile product
- Space saving. Using sterile refills to reload racks directly during long periods in hoods and PCR workstations saves up to 20 % precious space
- Clear, plastic system components made from 100 % recycled plastic¹⁾
- Fully recyclable²⁾

¹⁾ Refill lid, spacers and base trays.

²⁾ All system components (excl. clear film wrap) made from recyclable polypropylene. Film wrap made from recyclable LDPE.

³⁾ Refill lid and base trays.

THE COMPACT STACK RACK



KEY BENEFITS

- ✓ Compact
- ✓ Stable design
- ✓ Convenient
- ✓ Autoclavable
- ✓ Recyclable¹⁾

Tip options:
Non-sterile tips.
Sterile tips.



960 TIPS IN ONE CONVENIENT & COMPACT UNIT

- Wide base for great stability
- Excellent choice for multi-channel use
- Transparent lid protects tips when not in use
- Tip information printed on the wafers can be read easily through the transparent lid without having to expose the tips
- Fully recyclable¹⁾



¹⁾ All system components (excl. clear film wrap) made from recyclable polypropylene. Film wrap made from recyclable LDPE.

THE SELF-STANDING, RESEALABLE BAG



KEY BENEFITS

- ✓ Economical
- ✓ Resealable
- ✓ Self-standing for easy access

Tip options:
Non-sterile tips.

ECONOMICAL – IDEAL FOR TEACHING LABS OR NON-CRITICAL WORK

- Self-standing bag for easy and convenient access and storage
- Tamper-proof, easy-open perforation strip
- Resealable zip-lock bag for safe, contamination-free storage

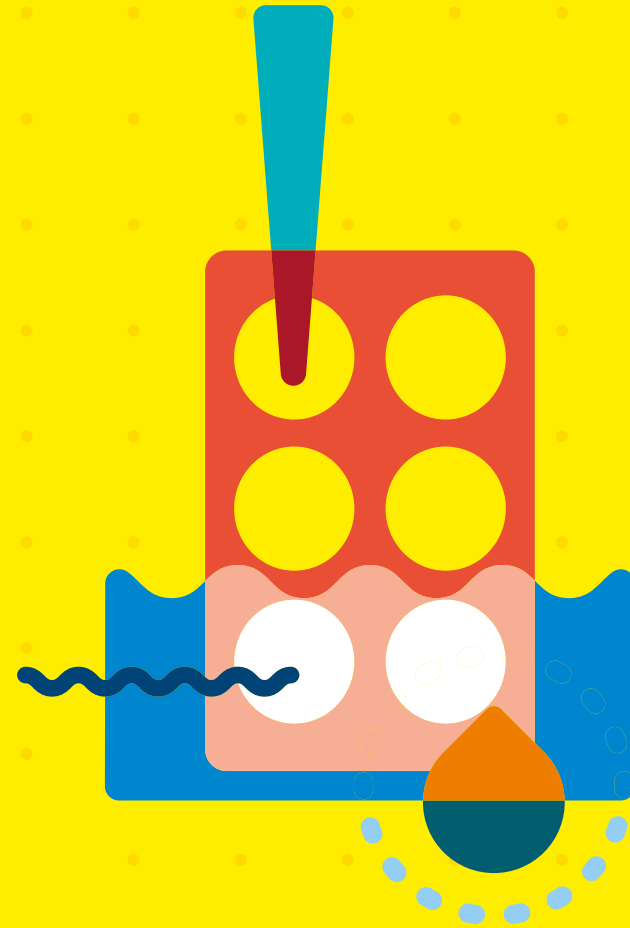
The **perfect** pipetting partnerships.



ErgoOne® manual and electronic pipettes. For more information and ordering, go to:

 starlab.click/pipettes

- Product overview.
- **Ordering information.**
- TipOne® 'evolution movement'.



Ordering information.

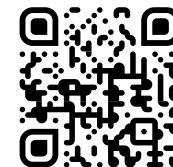
TipOne® the trusted tip: pure, but not simple.



- 1 PURE QUALITY**
TipOne® tips are manufactured from pure, virgin polypropylene to ensure the highest quality product.
- 2 ONE TIP FITS ALL**
The flexible tip collar fits all popular pipettes, even those with worn tip holders! Thin-wall technology ensures a perfect seal while also reducing the loading and ejection forces.
- 3 EXCELLENT FILTER**
The TipOne® filter is one of the best on the market and protects against aerosol cross-contamination without trapping your valuable samples. The filters contain no additives to interfere with samples.
- 4 CLEAR PRECISION**
The latest injection moulding processes produce high precision, thin-walled tips with excellent clarity for better visibility of your samples.
- 5 BRILLIANT**
Highly polished moulds for an extremely smooth surface to reduce sample retention.
- 6 ULTRAPoint® ORIFICE**
Prevents sample hang up and makes it easier to touch-off the last drop of sample.

To help you with the correct volume selection, we have developed the **TipFinder**. No challenging tables to navigate, just an easy to use and always up to date, online tool!

starlab.click/tipfinder

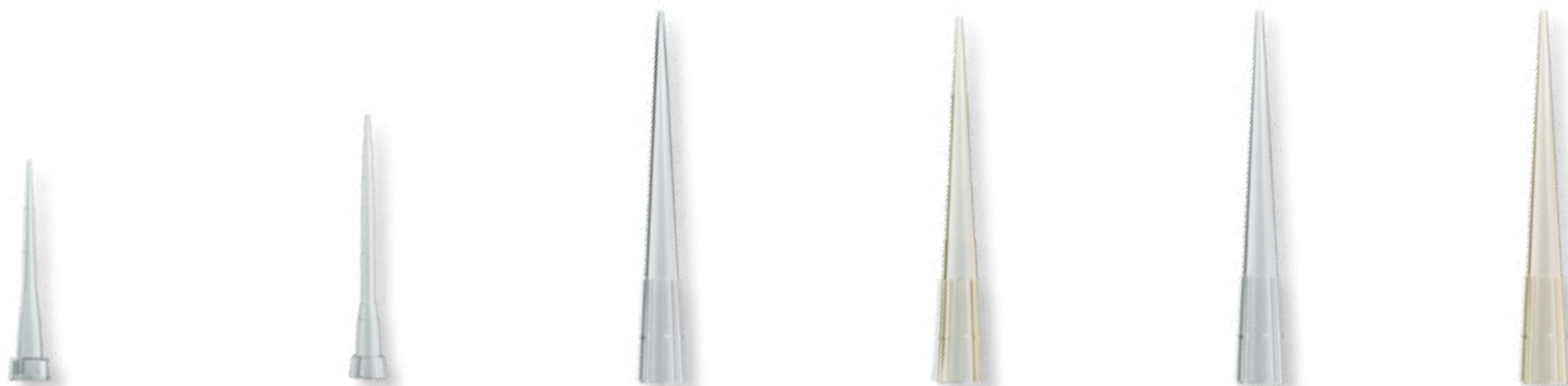


Ordering information



Products include system components made with recycled plastic. See pages 8 & 9 for details.

TipOne® non-sterile tips.



Description & Colour-coding	10 µl Graduated	10/20 µl XL Graduated	200 µl	200 µl Yellow	200 µl Bevelled	200 µl Yellow Bevelled
RACK 96-TIP RACK 	S1111-3800 (960 Tips)	S1110-3800 (960 Tips)	S1111-0800 (960 Tips)	S1111-0806 (960 Tips)	S1111-1800 (960 Tips)	S1111-1806 (960 Tips)
	S1111-3800-C (8 x 960 Tips)	S1110-3800-C (8 x 960 Tips)	S1111-0800-C (8 x 960 Tips)	S1111-0806-C (8 x 960 Tips)	S1111-1800-C (8 x 960 Tips)	S1111-1806-C (8 x 960 Tips)
REFILL 96-TIP REFILL 	S1111-3700 (960 Tips)	S1110-3700 (960 Tips)	S1111-0700 (960 Tips)	S1111-0706 (960 Tips)	S1111-1700 (960 Tips)	S1111-1706 (960 Tips)
	S1111-3700-C (10 x 960 Tips)	S1110-3700-C (10 x 960 Tips)	S1111-0700-C (10 x 960 Tips)	S1111-0706-C (10 x 960 Tips)	S1111-1700-C (10 x 960 Tips)	S1111-1706-C (10 x 960 Tips)
STACK RACK 960 TIP STACK 	S1111-3200 (960 Tips)	N/A	S1111-0200 (960 Tips)	S1111-0206 (960 Tips)	S1111-1200 (960 Tips)	S1111-1206 (960 Tips)
	S1111-3200-C (10 x 960 Tips)	N/A	S1111-0200-C (10 x 960 Tips)	S1111-0206-C (10 x 960 Tips)	S1111-1200-C (10 x 960 Tips)	S1111-1206-C (10 x 960 Tips)
LOOSE 1000 TIP BAG 	S1111-3000 (1000 Tips)	S1110-3000 (1000 Tips)	S1111-0000 (1000 Tips)	S1111-0006 (1000 Tips)	S1111-1000 (1000 Tips)	S1111-1006 (1000 Tips)
	S1111-3000-C (50 x 1000 Tips)	S1110-3000-C (50 x 1000 Tips)	S1111-0000-C (25 x 1000 Tips)	S1111-0006-C (25 x 1000 Tips)	S1111-1000-C (25 x 1000 Tips)	S1111-1006-C (25 x 1000 Tips)

Tips shown approx. actual size. N/A = not available. All tips certified RNase, DNase, DNA and Pyrogen free.



Products include system components made with recycled plastic. See pages 8 & 9 for details.

Ordering information
TipOne®
non-sterile tips.



Description & Colour-coding	200 µl UltraPoint® Graduated	200 µl Yellow UltraPoint® Graduated	300 µl Graduated	1000 µl Graduated	1000 µl Blue Graduated	1250 µl XL Graduated
RACK 96-TIP RACK 	S1113-1800 (960 Tips)	S1113-1806 (960 Tips)	S1110-9800 (960 Tips)	S1111-6800 (960 Tips)	S1111-6801 (960 Tips)	S1112-1820 (960 Tips)
	S1113-1800-C (8 x 960 Tips)	S1113-1806-C (8 x 960 Tips)	S1110-9800-C (8 x 960 Tips)	S1111-6800-C (4 x 960 Tips)	S1111-6801-C (4 x 960 Tips)	S1112-1820-C (4 x 960 Tips)
REFILL 96-TIP REFILL 	S1113-1700 (960 Tips)	S1113-1706 (960 Tips)	S1110-9700 (960 Tips)	S1111-6700 (960 Tips)	S1111-6701 (960 Tips)	S1112-1720 (960 Tips)
	S1113-1700-C (10 x 960 Tips)	S1113-1706-C (10 x 960 Tips)	S1110-9700-C (10 x 960 Tips)	S1111-6700-C (10 x 960 Tips)	S1111-6701-C (10 x 960 Tips)	S1112-1720-C (10 x 960 Tips)
STACK RACK 960 TIP STACK 	S1113-1200 (960 Tips)	S1113-1206 (960 Tips)	N/A	N/A	N/A	N/A
	S1113-1200-C (10 x 960 Tips)	S1113-1206-C (10 x 960 Tips)	N/A	N/A	N/A	N/A
LOOSE 1000 TIP BAG 	S1113-1000 (1000 Tips)	S1113-1006 (1000 Tips)	S1110-9000 (1000 Tips)	S1111-6000 (1000 Tips)	S1111-6001 (1000 Tips)	S1112-1020 (1000 Tips)
	S1113-1000-C (25 x 1000 Tips)	S1113-1006-C (25 x 1000 Tips)	S1110-9000-C (25 x 1000 Tips)	S1111-6000-C (20 x 1000 Tips)	S1111-6001-C (20 x 1000 Tips)	S1112-1020-C (16 x 1000 Tips)

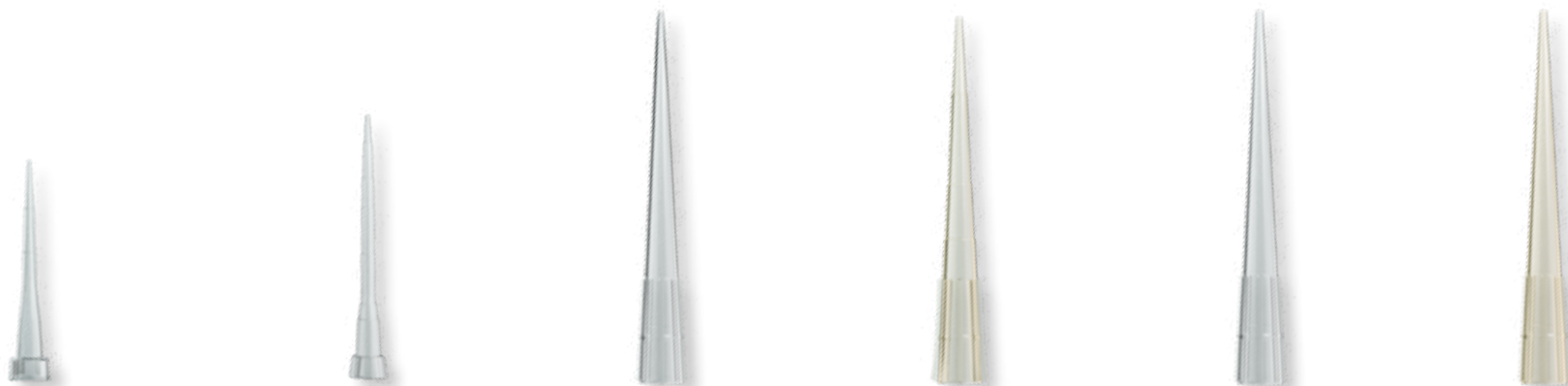
Tips shown approx. actual size. N/A = not available. All tips certified RNase, DNase, DNA and Pyrogen free.

Ordering information



Products include system components made with recycled plastic. See pages 8 & 9 for details.

TipOne® sterile tips.



Description & Colour-coding	10 µl Graduated	10/20 µl XL Graduated	200 µl	200 µl Yellow	200 µl Bevelled	200 µl Yellow Bevelled
RACK 96-TIP RACK 	S1111-3810 (960 Tips)	S1110-3810 (960 Tips)	S1111-0810 (960 Tips)	S1111-0816 (960 Tips)	S1111-1810 (960 Tips)	S1111-1816 (960 Tips)
	S1111-3810-C (8 x 960 Tips)	S1110-3810-C (8 x 960 Tips)	S1111-0810-C (8 x 960 Tips)	S1111-0816-C (8 x 960 Tips)	S1111-1810-C (8 x 960 Tips)	S1111-1816-C (8 x 960 Tips)
REFILL 96-TIP REFILL 	N/A	S1110-3710 (960 Tips)	N/A	N/A	S1111-1710 (960 Tips)	S1111-1716 (960 Tips)
	N/A	S1110-3710-C (8 x 960 Tips)	N/A	N/A	S1111-1710-C (8 x 960 Tips)	S1111-1716-C (8 x 960 Tips)
STACK RACK 960 TIP STACK 	S1111-3210 (960 Tips)	N/A	S1111-0210 (960 Tips)	N/A	S1111-1210 (960 Tips)	N/A
	S1111-3210-C (10 x 960 Tips)	N/A	S1111-0210-C (10 x 960 Tips)	N/A	S1111-1210-C (10 x 960 Tips)	N/A






Tips shown approx. actual size. N/A = not available. All tips certified RNase, DNase, DNA and pyrogen free.



Products include system components made with recycled plastic. See pages 8 & 9 for details.

Ordering information TipOne® sterile tips.



Description & Colour-coding	200 µl UltraPoint® Graduated	200 µl Yellow UltraPoint® Graduated	300 µl Graduated	1000 µl Graduated	1000 µl Blue Graduated	1250 µl XL Graduated
RACK 96-TIP RACK 	S1113-1810 (960 Tips)	S1113-1816 (960 Tips)	S1110-9810 (960 Tips)	S1111-6810 (960 Tips)	S1111-6811 (960 Tips)	S1112-1830 (960 Tips)
	S1113-1810-C (8 x 960 Tips)	S1113-1816-C (8 x 960 Tips)	S1110-9810-C (8 x 960 Tips)	S1111-6810-C (4 x 960 Tips)	S1111-6811-C (4 x 960 Tips)	S1112-1830-C (4 x 960 Tips)
REFILL 96-TIP REFILL 	S1113-1710 (960 Tips)	S1113-1716 (960 Tips)	S1110-9710 (960 Tips)	N/A	N/A	S1112-1730 (960 Tips)
	S1113-1710-C (8 x 960 Tips)	S1113-1716-C (8 x 960 Tips)	S1110-9710-C (8 x 960 Tips)	N/A	N/A	S1112-1730-C (4 x 960 Tips)
STACK RACK 960 TIP STACK 	N/A	S1113-1216 (960 Tips)	N/A	N/A	N/A	N/A
	N/A	S1113-1216-C (10 x 960 Tips)	N/A	N/A	N/A	N/A

Tips shown approx. actual size. N/A = not available. All tips certified RNase, DNase, DNA and pyrogen free.

TipOne® sterile filter tips.



NOTHING GOES THROUGH!

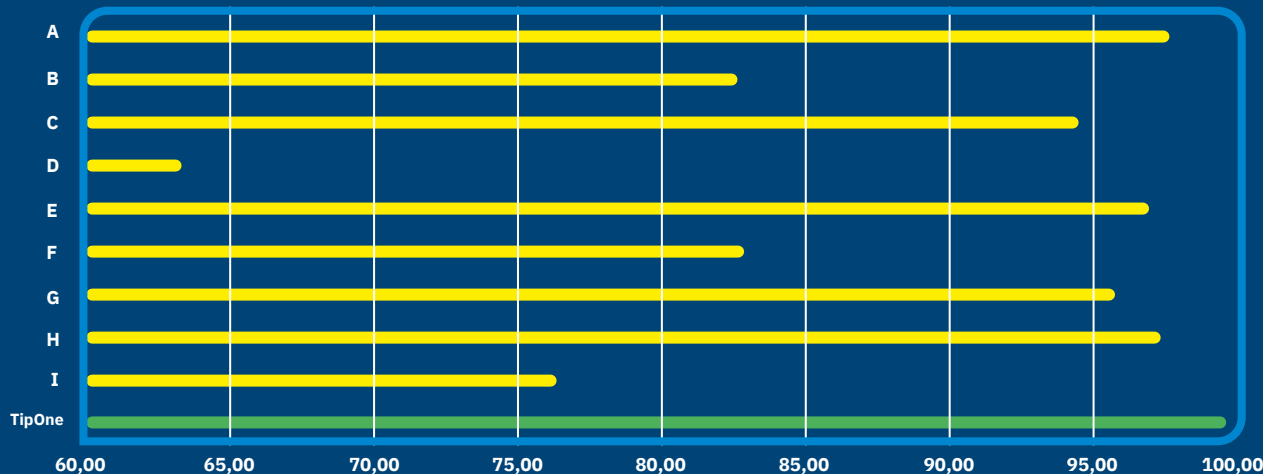
Protect your samples against unwanted contamination with TipOne® filter tips. When pipetting, it's not possible to see by eye if fine aerosols are going into your pipette which can go on to contaminate other samples at a later date.

The TipOne® filter protects against aerosol cross-contamination without trapping your valuable samples. The filters in TipOne® filter tips are one of the best filters available on the market. They are proven* to block >99% of aerosols.

FILTER TIP FEATURES


- Highly effective HDPE filter
- Filter contains no additives to interfere with your samples
- The filter will not absorb samples, allowing recovery if needed
- Sterile and RNase, DNase, DNA and Pyrogen free

Blocking of particles (diam. approx. 100 nm) [%]
TipOne® filter tips compared to other manufacturers' filter tips*



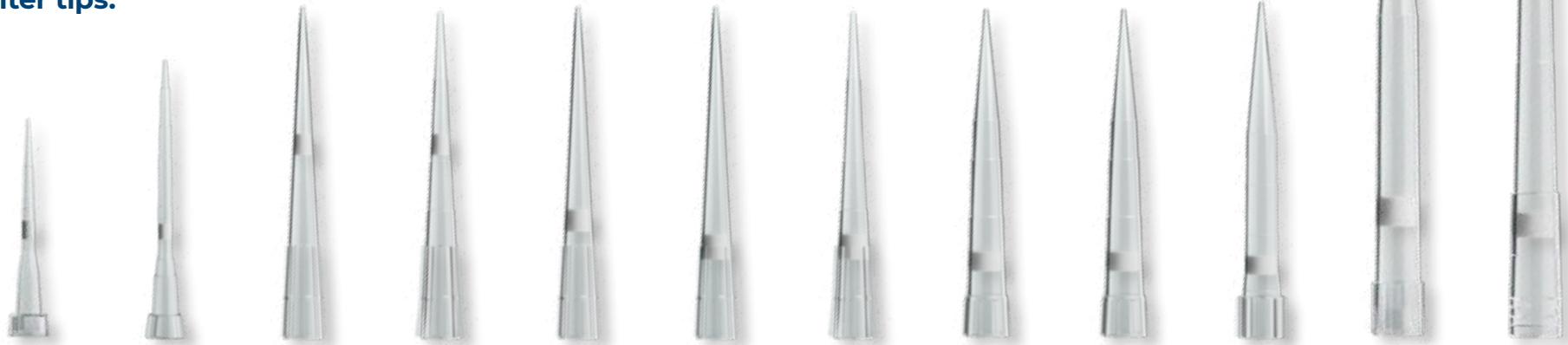
* The comparative tests were conducted in an independent test institute with filter tips from other leading manufacturers.





 Products include system components made with recycled plastic. See pages 8 & 9 for details.

Ordering information
TipOne®
 sterile filter tips.

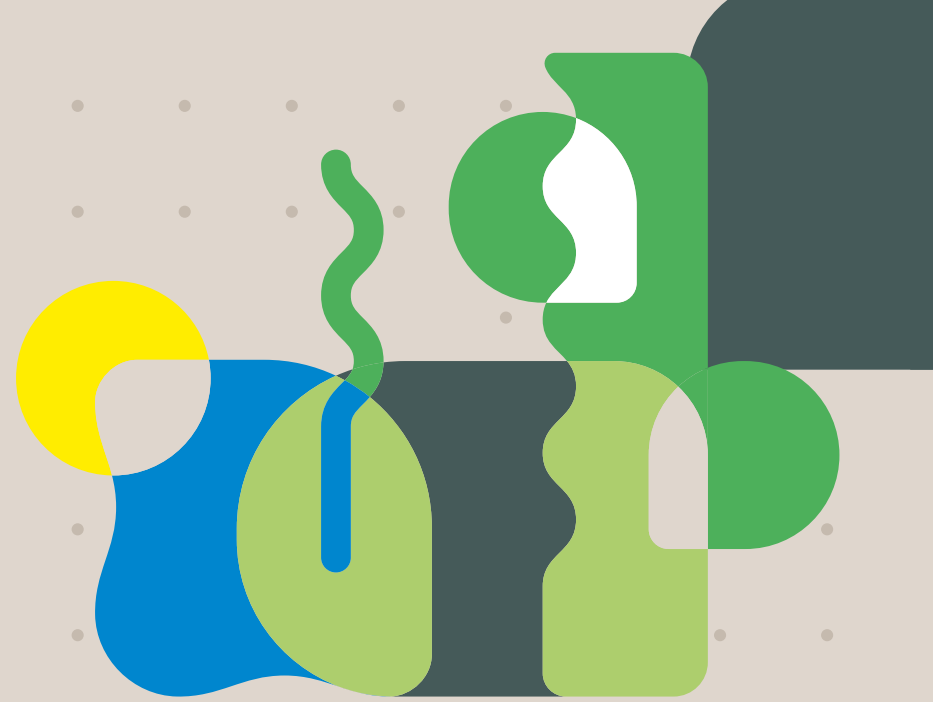
NEW!



Description & Colour-coding	10 µl Graduated	10/20 µl XL Graduated	20 µl Bevelled	20 µl UltraPoint® Graduated	50 µl Bevelled	100 µl Bevelled	100 µl UltraPoint® Graduated	200 µl Graduated	200 µl UltraPoint® Graduated	300 µl Graduated	1000 µl	1000 µl XL Graduated
RACKED 96-TIP RACK 	S1121-3810 (960 Tips)	S1120-3810 (960 Tips)	S1120-1810 (960 Tips)	S1123-1810 (960 Tips)	S1120-2810 (960 Tips)	S1120-1840 (960 Tips)	S1123-1840 (960 Tips)	S1120-8810 (960 Tips)	S1123-8810 (960 Tips)	S1120-9810 (960 Tips)	S1126-7810 (960 Tips)	S1122-1830 (960 Tips)
	S1121-3810-C (8 x 960 Tips)	S1120-3810-C (8 x 960 Tips)	S1120-1810-C (8 x 960 Tips)	S1123-1810-C (8 x 960 Tips)	S1120-2810-C (8 x 960 Tips)	S1120-1840-C (8 x 960 Tips)	S1123-1840-C (8 x 960 Tips)	S1120-8810-C (8 x 960 Tips)	S1123-8810-C (8 x 960 Tips)	S1120-9810-C (8 x 960 Tips)	S1126-7810-C (4 x 960 Tips)	S1122-1830-C (4 x 960 Tips)
REFILL 96-TIP REFILL 	S1121-2710 (960 Tips)	S1120-3710 (960 Tips)	S1120-1710 (960 Tips)	S1123-1710 (960 Tips)	S1120-2710 (960 Tips)	S1120-1740 (960 Tips)	S1123-1740 (960 Tips)	S1120-8710 (960 Tips)	S1123-8710 (960 Tips)	S1120-9710 (960 Tips)	S1126-7710 (960 Tips)	S1122-1730 (960 Tips)
	S1121-2710-C (8 x 960 Tips)	S1120-3710-C (8 x 960 Tips)	S1120-1710-C (8 x 960 Tips)	S1123-1710-C (8 x 960 Tips)	S1120-2710-C (8 x 960 Tips)	S1120-1740-C (8 x 960 Tips)	S1123-1740-C (8 x 960 Tips)	S1120-8710-C (8 x 960 Tips)	S1123-8710-C (8 x 960 Tips)	S1120-9710-C (8 x 960 Tips)	S1126-7710-C (4 x 960 Tips)	S1122-1730-C (4 x 960 Tips)

Tips shown approx. actual size. All tips certified RNase, DNase, DNA and Pyrogen free.

- Product overview.
- Ordering information.
- **TipOne® 'ecolution movement'.**



TipOne® 'ecolution movement'.

The TipOne® pipette tip system is evolving...

SAVING PLASTIC SINCE 1998

Back in 1998, TipOne® was designed as a plastic saving pipette tip system; designed to be reusable, refillable and recyclable, with the least components parts, interchangeable across the system.

The redesign in 2015 was more than just an update of its look. Through our expertise in injection moulding processes, the new system overall takes less plastic to make without any compromise to quality. As well as saving even more plastic, the redesign incorporated our vision for long-term sustainable benefits.

We know this a marathon, not a sprint, and there is still some way to go. We have already made some significant steps on our journey towards making pipetting more sustainable, and there will be more to come. This is the story so far.

The redesign was about so much more than just giving TipOne® a make over. The changes also incorporated forward planning for a long-term vision for improving the system's sustainability.

THE JOURNEY CONTINUES!

The base of TipOne® racks are now being made with 25% recycled plastic (from July 2024)

Clear plastic system components on all TipOne® refills now made with 100% recycled plastic

The sterile refill provides a safe, plastic-saving alternative to racked sterile tips, which further promotes reuse of the TipOne® racks.

The TipOne® recycling service in partnership with Remondis was created, with a long-term goal of reusing the plastic again in our own products.

Why less is more with TipOne®.

REDUCE

CO₂ EMISSIONS

100 %

GREEN ENERGY

TipOne® is made in a factory powered entirely by wind.



USE OF NATURAL RESOURCES

100 %

RECYCLED PLASTIC

The clear plastic system components on all refills (ie, bases, lids and spacers) are made from 100 % recycled plastic.



Reusing recycled plastic reduces the need to extract new, raw materials from the earth and protects natural resources.

25 %

RECYCLED PLASTIC

The blue base of TipOne® racks are made with 25 % recycled plastic (all racks manufactured July 2024 and after).



REFILL

TO SAVE PLASTIC WASTE

63 %

PLASTIC SAVED

when using a sterile refill compared to using the racked equivalent on tip volumes 10 to 300 µl. (53 % less plastic on tip volumes 1000 and 1250 µl.)



807 g

PLASTIC SAVED

when using the 1250 µl refill compared to racked equivalent. (466 g for 10 µl; 546 g for 200/300 µl and 737 g for 1000 µl.) All savings per 960 tips.



& REDUCE TRANSPORTATION

SPACE SAVING

REFILLS

Using the space-saving TipOne® refills also reduces packaging and transportation needs, compared to pre-racked tips.



REUSE

THE RACKS AGAIN & AGAIN

100

AUTOClave CYCLES

TipOne® racks are designed to be reused. We have tested them; they can withstand at least 100 autoclave cycles (with wafers inserted) without any loss of shape or quality.



UP

CYCLE

Reuse TipOne® racks for creative storage solutions. They make great autoclaving vessels for small tubes, or use as small, stackable storage boxes on the bench or in the hood. They also make great plant pots!



CASE CARTON FOR RECYCLING

SECOND LIFE

Buy your tips by the case, and reuse the case carton to send us your TipOne® polypropylene for recycling. We will recycle the box, as well as the plastic!



RECYCLE

IT'S QUICK & EASY!

ZERO

OTHER MATERIAL

TipOne® system components are made entirely from recyclable polypropylene (PP) and contain no labels or other materials, so recycling is quick and easy.



100 %

OF YOUR RECYCLING WILL BE REUSED

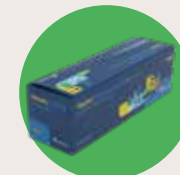
95% to 98% will be reused to make other products. 2% to 5% is polypropylene dust created during the shredding process, which will be reused by other manufacturers for specialist production needs.



100 %

RECYCLED & RECYCLABLE CARDBOARD

Pack and case cartons for all TipOne® products made from recycled and recyclable cardboard.



TipOne® recycling service.

WHAT CAN BE RECYCLED?

All polypropylene (PP) components of the TipOne® system can be collected for recycling via the Starlab TipOne® recycling service. Please only return clean, non-contaminated TipOne® items, and no tips!



Rack: base, lid, tip wafer

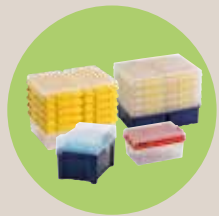
Refills: clear base, lid, spacers, tip wafer

Stack Rack: base, layers, lid, tip wafer

(Basically, all plastic TipOne® system components, excluding tips and the clear film wrap, can be returned for recycling.)



WHAT HAPPENS TO MY RECYCLING?



You collect your TipOne® PP system components for recycling, and arrange a collection



The recycling is taken to the recycling company. The first step in the recycling process is the crushing of the TipOne® plastic. The shredded material is then processed into plastic granulate.

FIND OUT HERE WHAT HAPPENS AT THE RECYCLING COMPANY:



WATCH VIDEO



The plastic granulate is then processed further



New, high quality plastic product

And made into new plastic products

HOW THE SERVICE WORKS

It's easy to use! Collect the recycling, go online to organise a collection, and a courier will come in and pick it up. The convenient service allows you to organise the regularity of collections to suit your lab's needs.

SIGN UP NOW!

Starlab's recycling service is available to all TipOne® customers located in Austria, France, Germany and the UK. (Available in Italy soon!)

To join, you can sign up here:
www.starlab.click/recycling

Some international dealers of Starlab products also offer their own recycling services for TipOne® polypropylene. To find out where, go to www.starlab.click/recycling-int



T: +49 (0)40 675 99 39 0
info@starlab.de
www.starlab.de



T: +44 (0)1908 283800
infoline@starlab.co.uk
www.starlab.co.uk



T: +33 (0)1 60 13 71 70
info@starlab.fr
www.starlab.fr



For our international
dealers, please go to
starlab.click/**distributors**



T: +39 (0)2 7020 1040
info@starlab.it
www.starlab.it



T: +41 56 6645 980
info@starlab.ch
www.starlab.ch



THE TipOne® PIPETTE TIP SYSTEM

For over 25 years, TipOne® Pipette Tips have been the unwavering choice for laboratories worldwide. Our commitment to quality and reliability whilst also working towards providing one of the most sustainable pipette tip systems on the market, has made TipOne® the trusted partner of eco-conscious scientists and researchers who demand excellence.

Our tips fit all popular pipettes, ensuring seamless compatibility and ease of use for all pipettes in your lab. But it's not just about convenience: we've consistently delivered on our promise of quality and reliability, empowering you to focus on what truly matters to you – your research.

 starlab.click/tipone